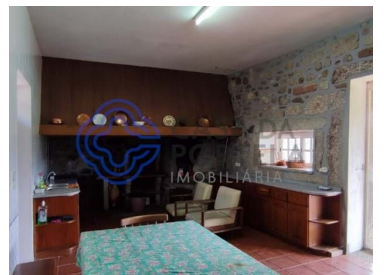




Carreira e Refojos de Riba de Ave - Farmhouse



 **9**
Bedrooms

 **3**
Bathrooms

 **500**
Area (m²)

 **11112**
Land Area (m²)

650 000 €
(EUR €)

Farm/Estate T5+ Used | 400 m2 | Santo Tirso | Riba de Ave's Career and Refojos

Farm T9 - S. Tirso

Designation Property for Own Housing, Tourism or Events

Description Property for Own Housing, Housing Tourism or Events, implemented on land with 560 m2.

Located in the Serra da Agrela Valley, 200 m from the Leça River, 24 Kms from Porto (about 20 minutes) and 7 Km from the Center of Santo Tirso and the Golf of Vale Pisão.

Quiet place, with rural landscape, in permanent contact with nature, plants and animals.

Family house, sunny and granite, 2 floors, useful living area of about 400 m2 completely recovered



Gustavo Melo

+351 910 339 113 ²

gustavomelo@casadaportela.pt

T +351 910 339 113 ² · E contact@infinityhome.pt
Rua Diogo Botelho - Porto
AMI 10340

¹ (Call to national fixed network) | ² (Call to national mobile network)



Your Logo Here
Friendly Real Estate

Q/H - 004

Reference

Scan the QR code to view the property



and ready to move in, with gazebo, large living areas.
leisure and interior courtyard.

Consisting of:

- 9 Rooms, 4 of which are suites
- 3 Service WC;
- Rustic kitchen complete, with fireplace, oven and barbecue;
- Wide dispensation;
- Great Hall, encompassing common room and fireplace;
- Swimming pool with supports and grass in the surrounding area;
- Press, Tank and Water Hole, for own consumption
- Orchard with several fruit trees and small vineyard;
- Central and water heating, with bottled gas;
- Closed garage for 3 cars;
- Solar panel;
- Negotiable furnitures.

It also includes 3 adjacent plots of land with agricultural suitability:

- To the west, land with 0.45 ha, with culture, branches, orchard, 4 chestnut trees, irrigation tank supplied by spring and annex for implements;
- To the south, land with 0.348 ha, with crops, branches and 8 olive trees;
- To the south, land with 0.1075 ha, with cultivation and ramada

Property Features

- Built year: 1938
- Energetic certification: F



Gustavo Melo

+351 910 339 113 ²

gustavomelo@casadaportela.pt

T +351 910 339 113 ² · E contact@infinityhome.pt

**Rua Diogo Botelho - Porto
AMI 10340**

¹ (Call to national fixed network) | ² (Call to national mobile network)