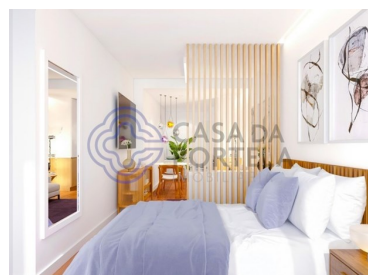
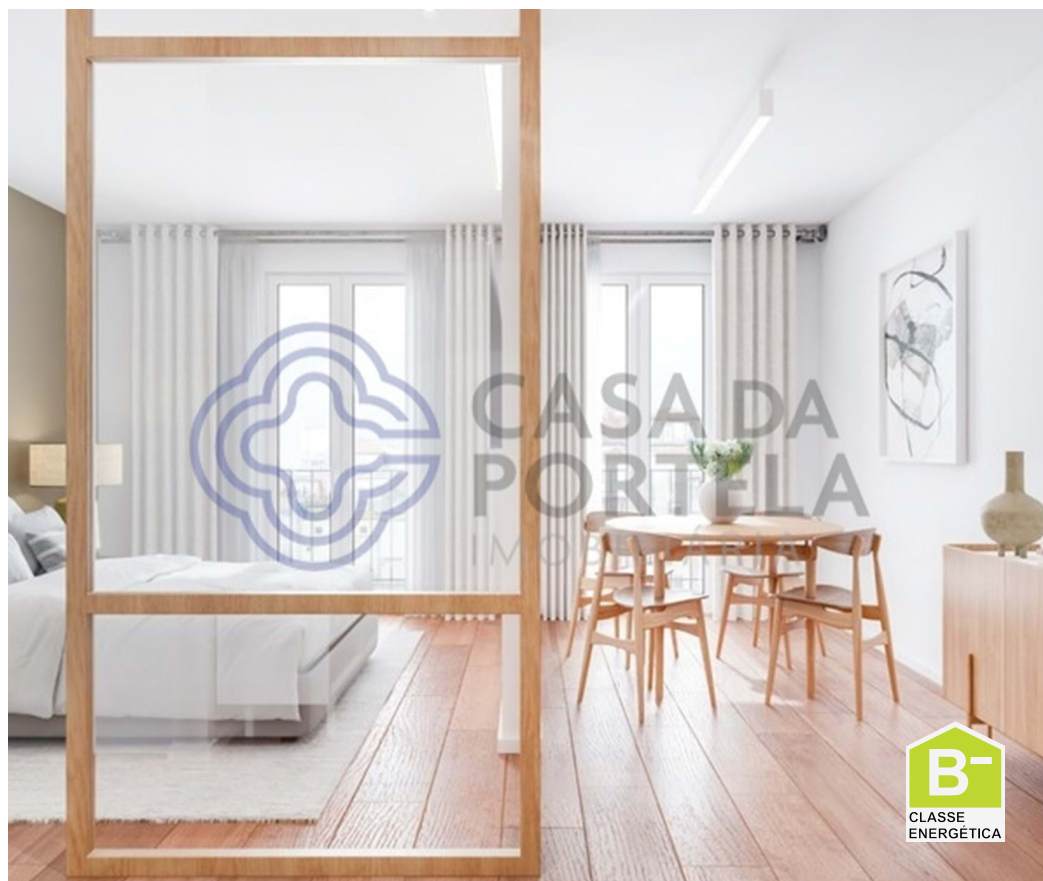




Cedofeita, Santo Ildefonso, Sé, Miragaia, São Nicolau e Vitória - Apartment



2
Bedrooms

2
Bathrooms

115,86
Area (m²)

668 000 €
(EUR €)

2 bedroom apartment

NEW 2 bedroom apartment with 109.15 m2 of living space and a 6.71 m2 balcony in downtown Porto. The apartment can be transformed into a T1 + T0.

The Marquesa Palace development is located in the oldest part of Porto, right next to the emblematic São Bento Station and the elegant Don Luís I Bridge. All of Porto's main attractions are within walking distance. The magnificent Marquesa Palace is the result of a rehabilitation project that perpetuates the design of 15th century urban architecture. The name of this building also does justice to its past, as it was once the residence of noble families, once known as 'Paço da Marquesa'. All the residential units can be sold fully decorated and furnished.

The Marquesa Palace rehabilitation project truly embraces its old design and goes one step further,



Gustavo Melo

+351 910 339 113 ²

gustavomelo@casadaportela.pt

T +351 910 339 113 ² · E contact@infinityhome.pt

Rua Diogo Botelho - Porto
AMI 10340

¹ (Call to national fixed network) | ² (Call to national mobile network)



creating harmonious interior spaces and units with strategic choice.

The Marquesa Palace building is being completely modernized into 16 premium residential units. The apartments range from 70.85 to 143.85m², with one and two bedroom units.

All apartments include air conditioning, double-glazed windows, fully equipped kitchens and can come fully furnished. Most of the units will have fantastic views over the iconic city of Porto.

The developer has acquired the entire building and will offer its clients the possibility of management services.

The apartments can come with a fixed return;

The management company can be responsible for all expenses including maintenance, condominium, water, electricity, internet, cable and insurance, among others.

Points of interest:

- Porto Cathedral: 4 min walk
- São Bento Station: 4 min walk
- Luís I Bridge: 4 min walk
- Minipreço: 7 min walk
- Clérigos Tower: 9 min walk
- Aliados: 9 min walk
- Lello Bookshop: 10 min walk
- Cais da Ribeira: 10 min walk
- Cordoaria: 12 min walk
- Porto Puppet Museum: 12 min walk
- Palácio da Bolsa: 13 min walk
- Porto Customs House: 21 min walk

Get in touch and schedule your visit!



Gustavo Melo

+351 910 339 113 ²

gustavomelo@casadaportela.pt

T +351 910 339 113 ² · E contact@infinityhome.pt

**Rua Diogo Botelho - Porto
AMI 10340**

¹ (Call to national fixed network) | ² (Call to national mobile network)



Property Features

- Furnished
- Floors: 1
- Lift
- Energetic certification: B-
- Balcony
- Built year: 2022
- Frontline property
- Double glazing
- Solar orientation: North, South



Gustavo Melo

+351 910 339 113 ²

gustavomelo@casadaportela.pt

T +351 910 339 113 ² · E contact@infinityhome.pt

**Rua Diogo Botelho - Porto
AMI 10340**

¹ (Call to national fixed network) | ² (Call to national mobile network)