



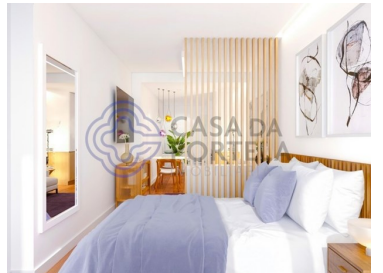
**Your Logo Here**  
Friendly Real Estate

E/006  
Reference

Scan the QR code to view the property



## Cedofeita, Santo Ildefonso, Sé, Miragaia, São Nicolau e Vitória - Apartment



**1**  
Bedrooms

**1**  
Bathrooms

**85,69**  
Area (m<sup>2</sup>)

**524 000 €**  
(EUR €)

### 1+1 Bedroom Apartment

NEW 1+1 bedroom apartment with 79.5 m2 of floor area and balcony with 6.1 m2 in downtown Porto. The Marquesa Palace development is situated in the oldest part of the city of Porto, right next to the emblematic São Bento Station and the elegant Don Luís I Bridge. The magnificent Marquesa Palace is the result of a rehabilitation project that perpetuates the design of the urban architecture of the fifteenth century. The name of this building also lives up to its past, as it was the residence of noble families, once known as 'Paço da Marquesa'. All residential units can be sold fully decorated and furnished.

Marquesa Palace's rehabilitation project truly embraces its ancient design and goes a step further, creating harmonious interior spaces and units with the strategic option.



**Gustavo Melo**

+351 910 339 113 <sup>2</sup>  
gustavomelo@casadaportela.pt

**T +351 910 339 113 <sup>2</sup> · E contact@infinityhome.pt**  
**Rua Diogo Botelho - Porto**  
**AMI 10340**

<sup>1</sup> (Call to national fixed network) | <sup>2</sup> (Call to national mobile network)



The Marquesa Palace building is being fully modernized into 16 premium segment residential units. The apartments range between 70.85 and 143.85m<sup>2</sup>, with T1 and T2 units.

All apartments include air conditioning, double-glazed windows, fully equipped kitchens and can come fully furnished. Most units will have fantastic views over the iconic city of Porto.

The company that promotes it has acquired the entire building and will provide its clients with the possibility of management services.

The apartments have the possibility of coming with a fixed return;

The management company may be responsible for all expenses including maintenance, condominium, water, electricity, internet, cable and insurance, among others.

Points of interest:

- Porto Sé Cathedral: 4 min walk
- São Bento Station: 4 min walk
- Luís I Bridge: 4 min walk
- Miniprice: 7 min walk
- Clérigos Tower 9 min walk
- Allies: 9 min walk
- Lello Bookstore: 10 min walk
- Ribeira Pier: 10 min walk
- Cordoaria: 12 min walk
- Porto Puppet Museum: 12 min walk
- Palácio da Bolsa: 13 min walk
- Porto Customs: 21 min walk

Get in touch and schedule your visit!

## Property Features

- Furnished
- Floors: 1
- Lift
- Energetic certification: B-
- Balcony
- Built year: 2022
- Frontline property
- Double glazing
- Solar orientation: North, South



**Gustavo Melo**

+351 910 339 113 <sup>2</sup>

[gustavomelo@casadaportela.pt](mailto:gustavomelo@casadaportela.pt)

**T +351 910 339 113 <sup>2</sup> · E [contact@infinityhome.pt](mailto:contact@infinityhome.pt)**

**Rua Diogo Botelho - Porto  
AMI 10340**

<sup>1</sup> (Call to national fixed network) | <sup>2</sup> (Call to national mobile network)